

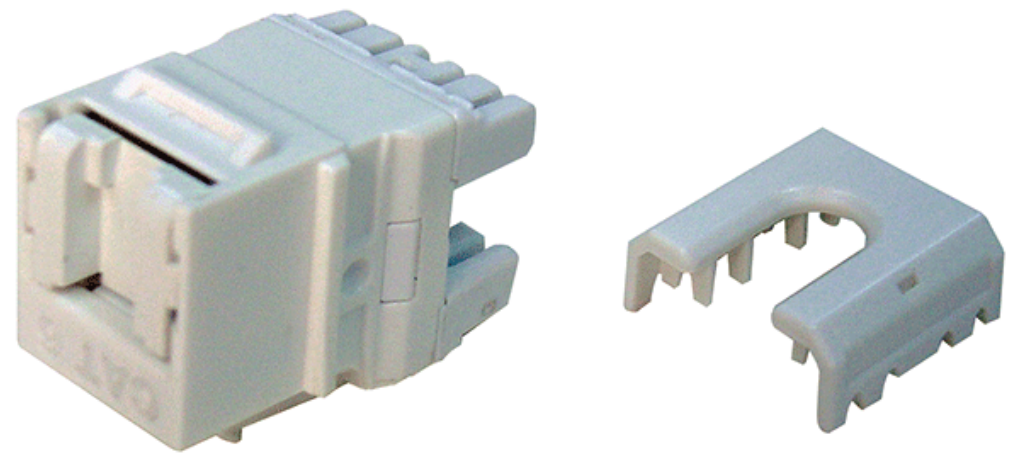
Publish Date : 28.03.2019 | Rev no: 02

# PowerMAX Cat.6 ezi-JACK Vertical Shuttered Jack

If its speed that you're after, then look no further than the DINTEK PowerMAX™ Category 6 Modular Jacks.

DINTEK Cat 6 Jacks provide performance that exceeds category 6 connecting hardware performance specifications. They also ensure backwards compatibility with components and systems of lower performing categories. DINTEK Installers and end users benefit from the ease of install and use, and with their compact design they are good for high density situations. For example, up to six modules can be utilized in a single face plate.

Combined with other DINTEK PowerMAX™ products, they are the perfect solution to your voice and data communications needs.

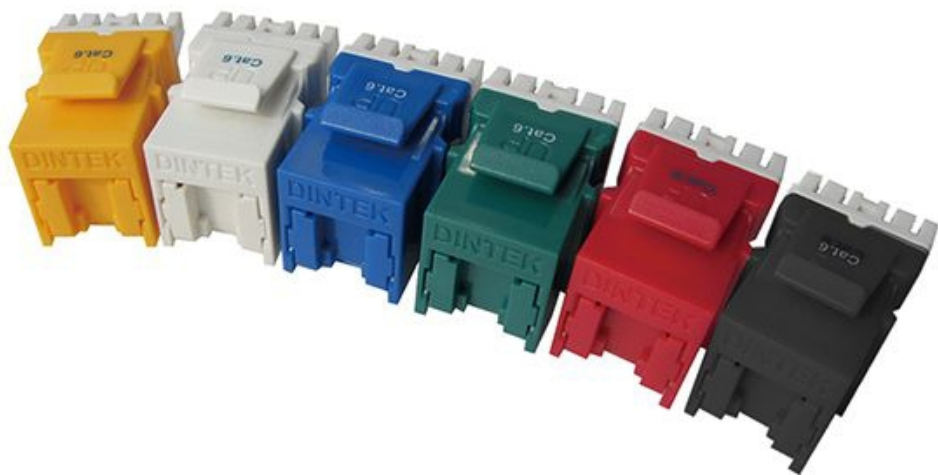


## Features

- Meet ANSI/TIA-568-C.2 Cat.6 15M Short Link requirements.
- Accept 22~24AWG, stranded or solid wire
- IDC connector with large space of each pair to improve crosstalk.
- Modular jack meet FCC part 68
- Wiring: T568A/B

## Independently Verified Certifications

- ETL Verified Certificate Of Conformance Number



## Applications

- Voice; T1; ISDN
- 10GBASE-T
- 16Mbps Token Ring (IEEE802.5)
- 100VG-AnyLAN (IEEE802.12)
- 100BASE-T Ethernet (IEEE802.3)
- 155/622Mbps 1.2/2.4 Gbps ATM
- 1000Mbps Gigabit Ethernet
- 550MHz Broadband Video

## Standards Conformance

- UL Verified
- ISO/IEC11801 2nd edition
- ANSI/TIA Standard 568-2.D
- CENELEC EN 50173

## Ordering Information

Product Number	Product Name	Orientation	Color	Std Pkg Qty
1305-04045	CAT.6 180 degree unshielded EZI F jack,T568A/B- Shuttered	Vertical	Yellow	1pcs/PE Bag
1305-04043	CAT.6 180 degree unshielded EZI F jack,T568A/B- Shuttered	Vertical	White	1pcs/PE Bag
1305-04044	CAT.6 180 degree unshielded EZI F jack,T568A/B- Shuttered	Vertical	Blue	1pcs/PE Bag
1305-04046	CAT.6 180 degree unshielded EZI F jack,T568A/B- Shuttered	Vertical	Green	1pcs/PE Bag
1305-04047	CAT.6 180 degree unshielded EZI F jack,T568A/B- Shuttered	Vertical	Red	1pcs/PE Bag
1305-04061	CAT.6 180 degree unshielded EZI F jack,T568A/B- Shuttered	Vertical	Black	1pcs/PE Bag

## Technical Specifications

Construction		
<b>Body</b>		
Connector Housing	High-impact, Flame-Retardant Plastic	
Standard	UL94V-0 rated	
<b>Front Connection</b>		
Contact Type	Spring Wire	
Material	Phosphor Bronze Alloy Plated with 50 micro-inch of Gold over 70~100 micro-inch of Nickel	
<b>Rear Terminals</b>		
Terminal Type	IDC	
Material	Phosphor Bronze Alloy with 100 micro-inch 100% Sn Alloy	
Physical Ranges		
<b>Temperature Range</b>		
	Storage	-40 to +70°C
	Operational	-10 to +60°C
<b>Relative humidity</b>		
	Operational	Max. non-condensing 93%
<b>Retention</b>		
		50N (11 lbf) for 60s ± 5s
<b>Insertion/Extraction life</b>		
		750 cycles minimum
<b>Number of IDC terminations</b>		
		200 minimum
Electrical		
Insulation Resistance	500 mΩ min.@ 100V d.c	
Dielectric Withstanding Voltage	1000 V d.c. or a.c. Peak Contact to Contact @ 60 Hz for 1 MIN.	
Spring Wire Contact Resistance	20 mΩ Max.	
Voltage/Current Rating	150VAC/1.5A	
IDC Contact Resistance	2.5 mΩ Max	

## Termination Demonstration

Vertical ezi-JACK Shuttered		
Strip 40mm of sheath from cable using stripper	Using working base, place wires as per color spec	Make sure that twists are right up to termination points
Insert jack into ezi-TOOL with Yellow cutting blade	Squeeze handles together terminating and trimming wires	Check terminations, then place dust cap onto jack

### DINTEK Electronic Limited

5F., No.8, Ln. 97, Wugong Rd.  
Xinzhuang Dist., New Taipei City 242  
Taiwan (R.O.C.)

P: Office: +886-2-22997898 E-mail: sales@dintek.com.tw W: www.dintek.com.tw

1305-040XX