

DATA SHEET

1101-04052E

Publish Date : 07.06.2019 | Rev no: 07

PowerMAX-EURO Cat.6 U/UTP 23AWG LSZH Cable

PowerMAX-EURO™ Cat6 UTP Cable - 305mtr 23AWG LSZH Blue - Dca Certified is custom made for the European market and has been Delta certified for use within the European union.

Applications

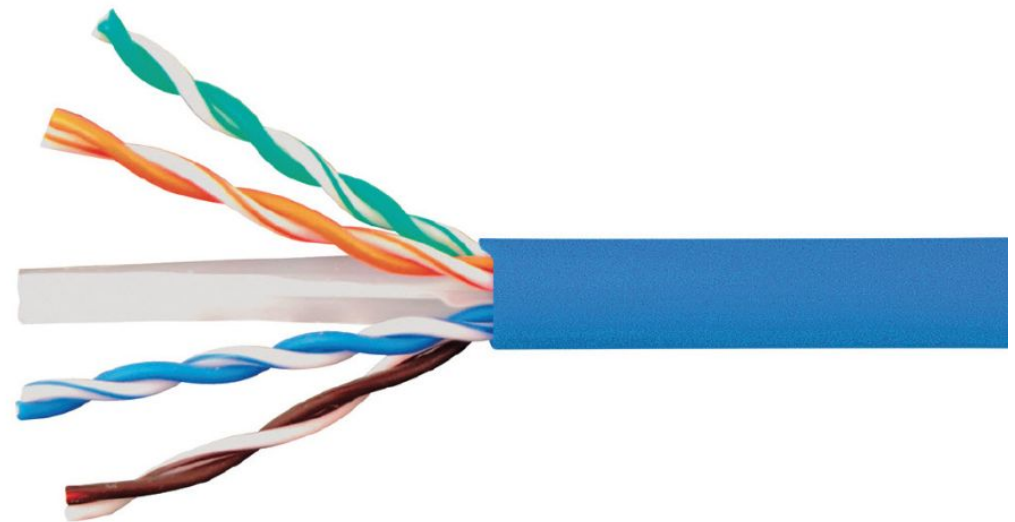
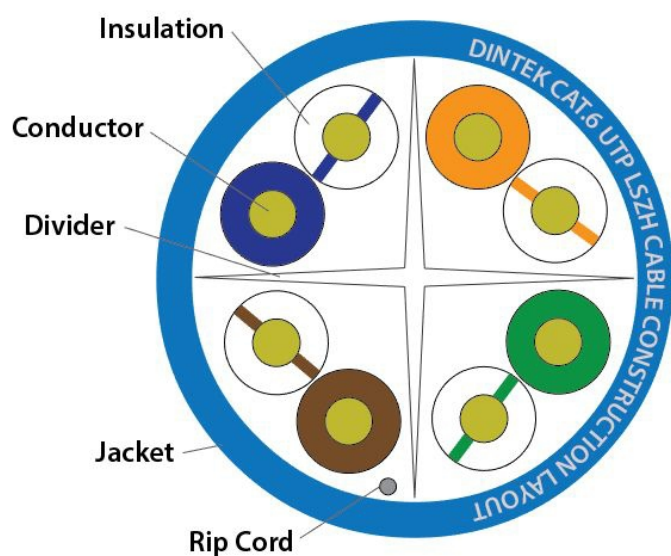
- Voice; T1; ISDN
- 100BASE-T Ethernet (IEEE802.3)
- 155/622Mbps 1.2/2.4 Gbps ATM
- 1000Mbps Gigabit Ethernet
- 550MHz Broadband Video

Standards Conformance

- ISO/IEC11801 2nd edition CLASS E
- ANSI/TIA-568-2.D standard
- CENELEC EN 50173-1,CENELEC
- EN 50288-5-1,IEC 61156-5
- CPR Class : Class Dca-s2,d2,a1
- EN 13501-6:2014
- EN 50575:2014 including amendment A1 :2016
- EN 60332-1-2:2004 including amendments A1 :2015 and A11 :2016
- PoE++ & 4PPoE - IEEE 802.3bt level 3 & 4

Independently Verified Certifications

DELTA Attestation of Conformity



Cable Features

- Conductor sizes for Cat.6 are set at 23AWG.
- By keeping the gauge size of the conductor larger, there is less heat generation caused and less drop of voltage over distance.
- Exceeds current ANSI/TIA and ISO Standards for performance.
- Capable of handling the latest ver. of power over Ethernet
- Tested and certified by Delta Laboratories for use within the European Union Countries

Performance Statistics

Frequency Mhz	Insertion Loss dB / 100mtrs	NEXT (dB)	Return Loss (dB)
1	2.1	75.0	20
4	3.8	66.3	23
10	6.0	60.3	25
16	7.6	57.2	25
20	8.5	55.8	25
31.25	10.7	52.9	23.6
62.5	15.5	48.4	21.5
100	19.9	45.3	20.1
200	29.1	40.8	18
250	33.0	39.3	17.3

Ordering Information

Product Number	Product Name	Jacket Type	Color	Length Qty
1101-04052E	PowerMAX-EURO Cat.6 U/UTP 23AWG LSZH Cable	LSZH	Blue	305m/Box

Technical Specifications

Construction

Conductor

Material	Bare Copper
Wire Size	23AWG
Diameter	

Insulation

Material	PE
Thickness	Min: 0.186 mm
Diameter	0.973mm ± 0.05
Colors	Blue/White-Blue Orange/White-Orange Green/White-Green Brown/White-Brown
Unaged Elongation (%)	Min. 100%
Unaged Tensile Strength	Min. 0.816 Kgf/mm ²

Jacket

Material	LSZH
Thickness	Nominal: 0.5 mm
Diameter	6.1 mm ± 0.3
Color	Blue
	CPR Class Dca-s2,d2,a1

Physical Ranges

Insulation

Min. Tension Strength	Before Aging	2400 psi
	After Aging	75% before aging (100°C X 48hrs)
Min Elongation (%)	Before Aging	300 %
	After Aging	75% before aging (100°C X 48hrs)

Jacket

Min. Tension Strength	Before Aging	1300 psi
	After Aging	60% before aging (100°C X 168hrs)
Min Elongation (%)	Before Aging	100 %
	After Aging	60% before aging (100°C X 168hrs)
Cold Bend Test	-20 ± 2°C X 4hrs no. crack	
Dielectric Strength	AC 1.7 KV for 2Sec.	
Min. Bending Radius	50mm	
Max. Pulling Tension	25 lbs	
Installation Temperature	-10°C to +60°C	
Operating Temperature	-10°C to +60°C	

Electrical

Conductor Resistance	Max. 9.5 Ω /100m @ 20°C
DC Resistance Unbalance	Max. 4%
Pair-to-Ground Capacitance Unbalance	1600 pF/km
Dielectric Strength of Insulation	AC 1.7 KV for 2Sec.
Insulation Resistance Test	Min. 5000 MΩ·Km
Mutual Capacitance	Max. 5600 pF/100m
Impedance 1~100MHz	100Ω ± 15%
Impedance 100~250MHz	100Ω ± 22%

DINTEK Electronic Limited

5F., No.8, Ln. 97, Wugong Rd.
Xinzhuang Dist., New Taipei City 242
Taiwan (R.O.C.)

P: Office: +886-2-22997898 E-mail: sales@dintek.com.tw W: www.dintek.com.tw

1101-04052E