

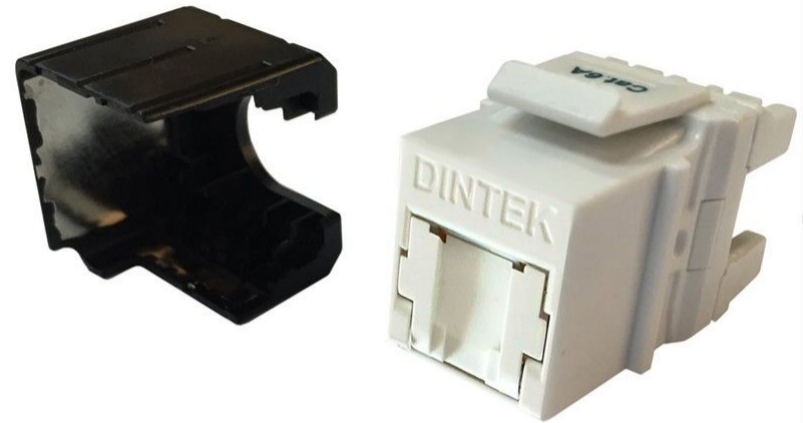
Publish Date: 24.05.2021 | Rev no: 61

PowerMAX+ Cat.6A ezi-JACK Shuttered Jack

DINTEK PowerMax+™ Cat.6A unshielded shuttered ezi-JACK180™ offers superior alien crosstalk suppression, excellent insertion loss, and provides enhanced electromagnetic interference (EMI) protection by utilizing robust high impact plastic construction.

The connector is dual color coded for either 568A or 568B wiring schedules. Being specifically designed for high-speed data transmission, the DINTEK PowerMax+™ Cat.6A unshielded ezi-JACK180™ is also backwards compatible with Cat.6 and Cat.5e systems.

Combined with other DINTEK PowerMAX+™ products, they are the perfect solution to your voice and data communications needs.



Features

- Meets ANSI/TIA-568-C.2 Cat.6A 15M short link requirements
- IDC connector with large space of each pair to improve crosstalk
- Complies with FCC part 68 and IEC 60603-7
- Wiring: T568A/B

Standards Conformance

- UL, ETL verified
- ANSI/TIA-568-C.2
- ISO/IEC 11801
- EN 50173

Applications

- Voice; T1; ISDN
- 10GBASE-T
- 16Mbps Token Ring (IEEE802.5)
- 100VG-AnyLAN (IEEE802.12)
- 100BASE-T Ethernet (IEEE802.3)
- 155/622Mbps 1.2/2.4 Gbps ATM
- 1000Mbps Gigabit Ethernet
- 550MHz Broadband Video



Ordering Information

Product Number	Product Name	Orientation	Color	Std Pkg Qty
1305-05020	PowerMAX+ Cat.6A ezi-JACK Vertical RJ45 Shuttered Jack	Vertical	White	1pcs/PE bag
1305-05021	PowerMAX+ Cat.6A ezi-JACK Vertical RJ45 Shuttered Jack	Vertical	Black	1pcs/PE bag

Technical Specifications

Construction

Body

Connector Housing High Impact Flame-Retardant Plastic

Standard UL94v-0 rated

Front Connection

Contact Type Spring Wire

Material Phosphor bronze alloy plated with 50 micro-inch of gold over 70~100 micro-inch of nickel

Rear Terminals

Terminal Type IDC

Material Phosphor Bronze alloy with 10 micro-inch 100% Sn alloy

Physical Ranges

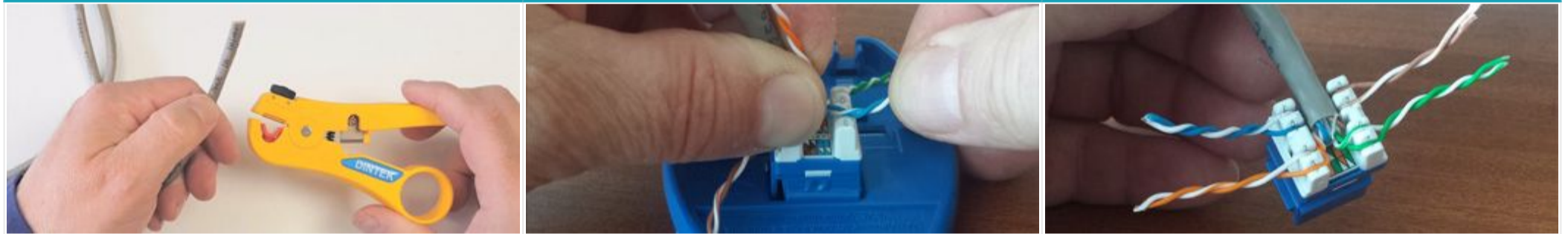
Temperature Range	Storage : -40 to +70°C Operational : -10 to +60°C
Relative humidity	Operational : Max. non-condensing 93%
Retention	50N (11 lbf) for 60s ± 5s
Insertion/Extraction life	750 cycles minimum
Number of IDC terminations	200 minimum
Total Mating Force	800 grams for a 8 wire leads minimum

Electrical

Insulation Resistance	500 MΩ min.@ 100V d.c
Dielectric Withstanding Voltage	1000 V d.c. or a.c. Peak Contact to Contact @ 60 Hz for 1 MIN.
Spring Wire Contact Resistance	20 mΩ Max
Voltage/Current Rating	150VAC/1.5A
IDC Contact Resistance	2.5 mΩ Max

Terminal Demonstration

Vertical ezi-JACK



Strip 40mm of sheath from cable using stripper

Using working base, place wires as per color spec

Make sure that twists are right up to termination points



Insert jack into ezi-TOOL with yellow cutting blade

Squeeze handles together to terminate and trim wires

Check terminations, then place dust cap onto jack

DINTEK Electronic Limited

台北市中山區中山北路二段96號 嘉新第二大樓五樓N511
 N511, 5F, 2nd Bldg, No. 96, Sec. 2, Zhongshan N. Rd. Zhongshan Dist., Taipei City 10449, Taiwan
 P: +886-2-22997898 E-mail: sales@dintek.com.tw W: www.dintek.com.tw

1305-05020